



CHAIN LINK FENCE MANUFACTURERS INSTITUTE

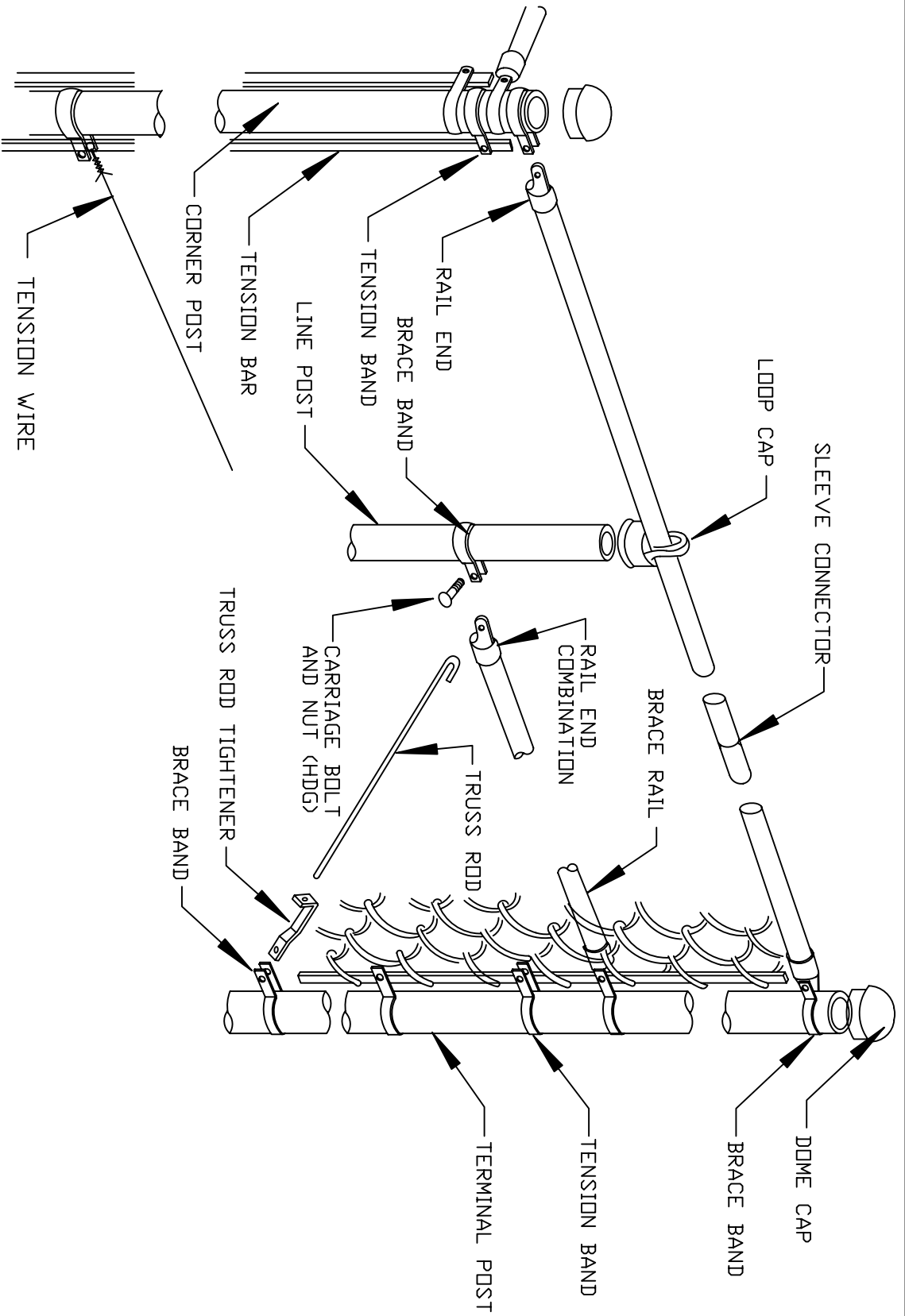
GUIDE FOR SPECIFYING COMMERCIAL INDUSTRIAL AND SECURITY CHAIN LINK FENCE AND GATES (CLFS 2445)

9 PAGES DRAWING

Extracted Pages from Original CLFMI Product Manual (CLF-PM0610)

(Pages 9 - 17 Drawings Only)

**Copyright (C) 2012 All rights reserved
Chain Link Fence Manufacturers Institute
10015 Old Columbia Road Suite B215
Columbia, MD 21046
www.chainlinkinfo.org**



Chain Link Fence Manufacturers Institute
 10015 Old Columbia Rd. Suite B 215
 Columbia, MD. 21046

TYPICAL FENCE SECTION

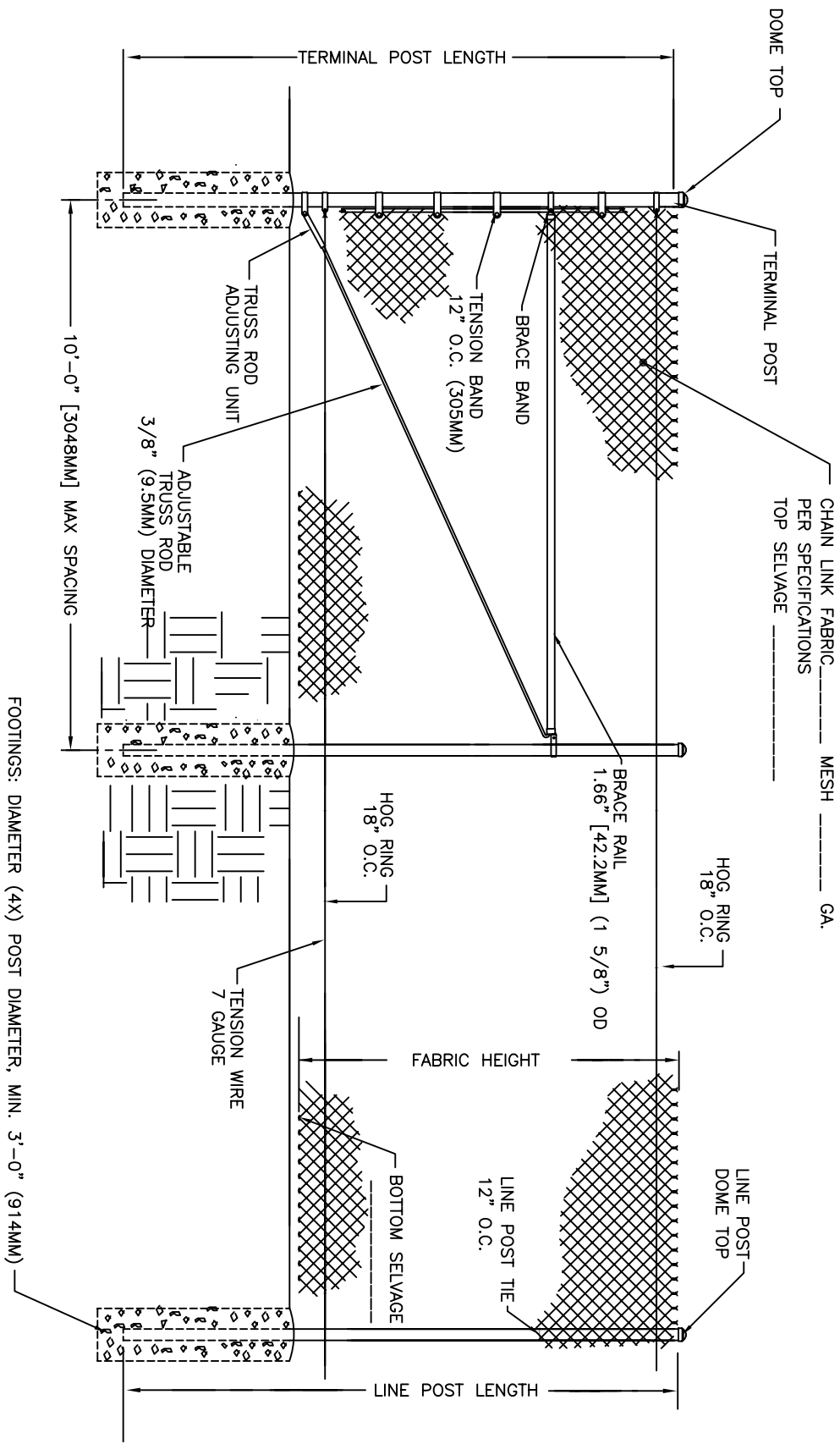
TOP RAIL / TRUSSED BRACE RAIL
 WITH BOTTOM TENSION WIRE
 DETAILS

COMPILED BY: ART
 DATE 02-11-10

CLEMII

DETAILS

SCALE:
 1/4" = 1'



Chain Link Fence Manufacturers Institute
 10015 Old Columbia Rd. Suite B 215
 Columbia, MD. 21046

TYPICAL FENCE SECTION

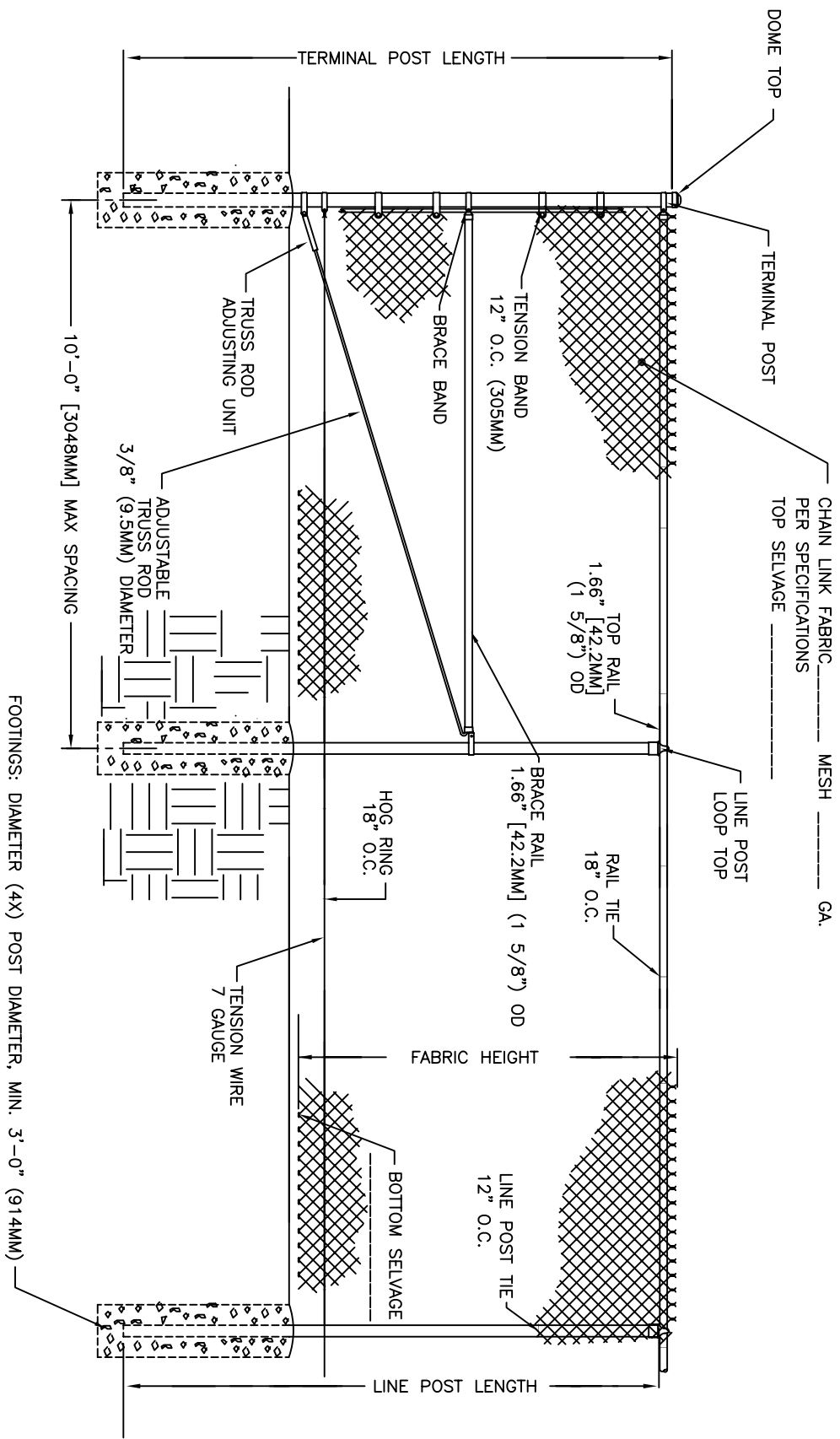
TYPICAL FENCE ELEVATION
 TRUSSED BRACE RAIL
 W/ TOP & BOTTOM TENSION WIRE

BY: _____ ART _____
 DATE: 02/11/10

CLEFMI

CLO

SCALE: 1:40



TYPICAL FENCE SECTION

CLEFMI

CLT

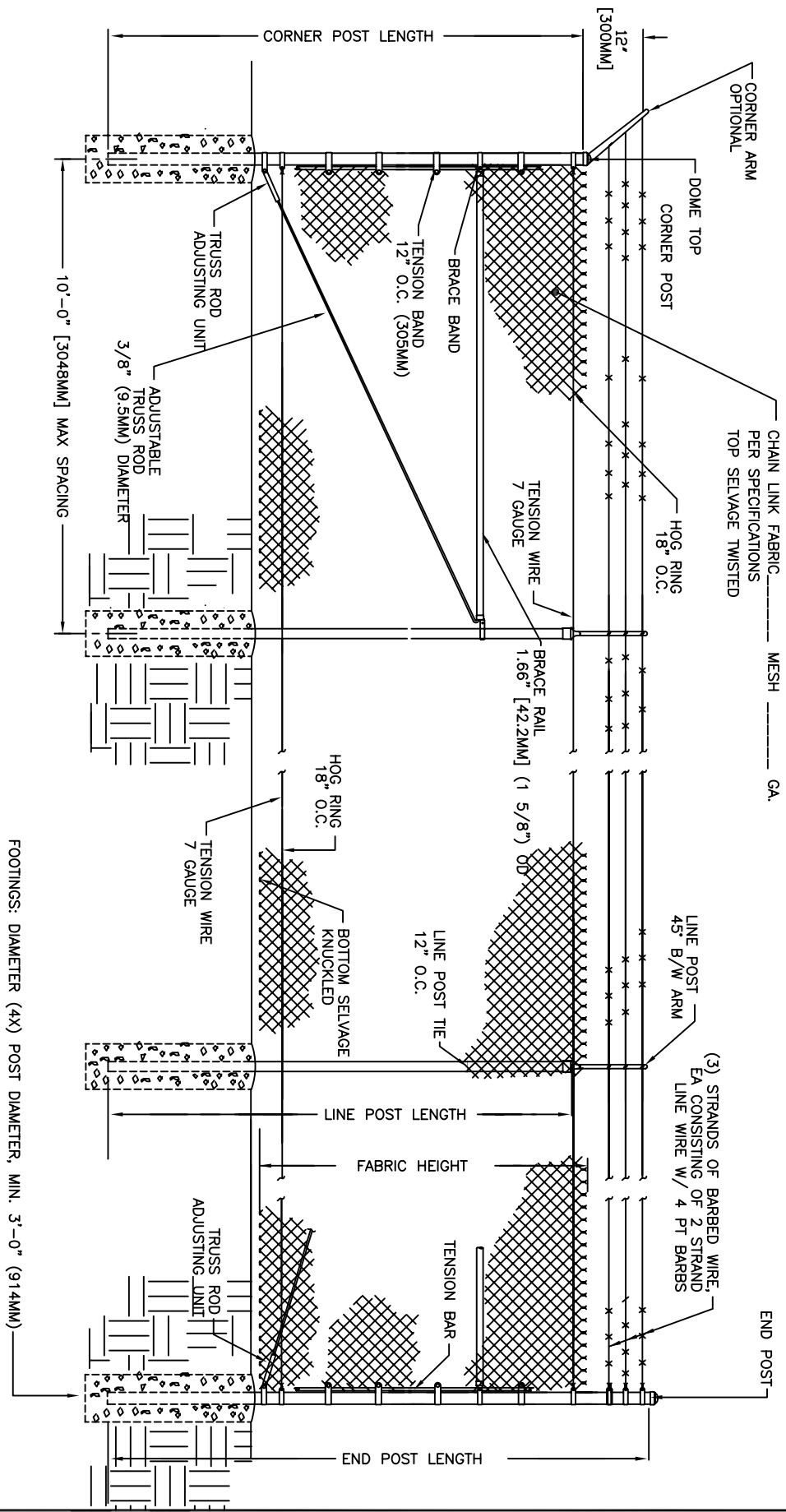
TYPICAL FENCE ELEVATION
TOP RAIL / TRUSSED BRACE RAIL
WITH BOTTOM TENSION WIRE

Chain Link Fence Manufacturers Institute
10015 Old Columbia Rd. Suite B 215
Columbia, MD. 21046



BY: ART
DATE: 02/11/10

SCALE: 1:40



TYPICAL FENCE SECTION

CLEMI
CLOA

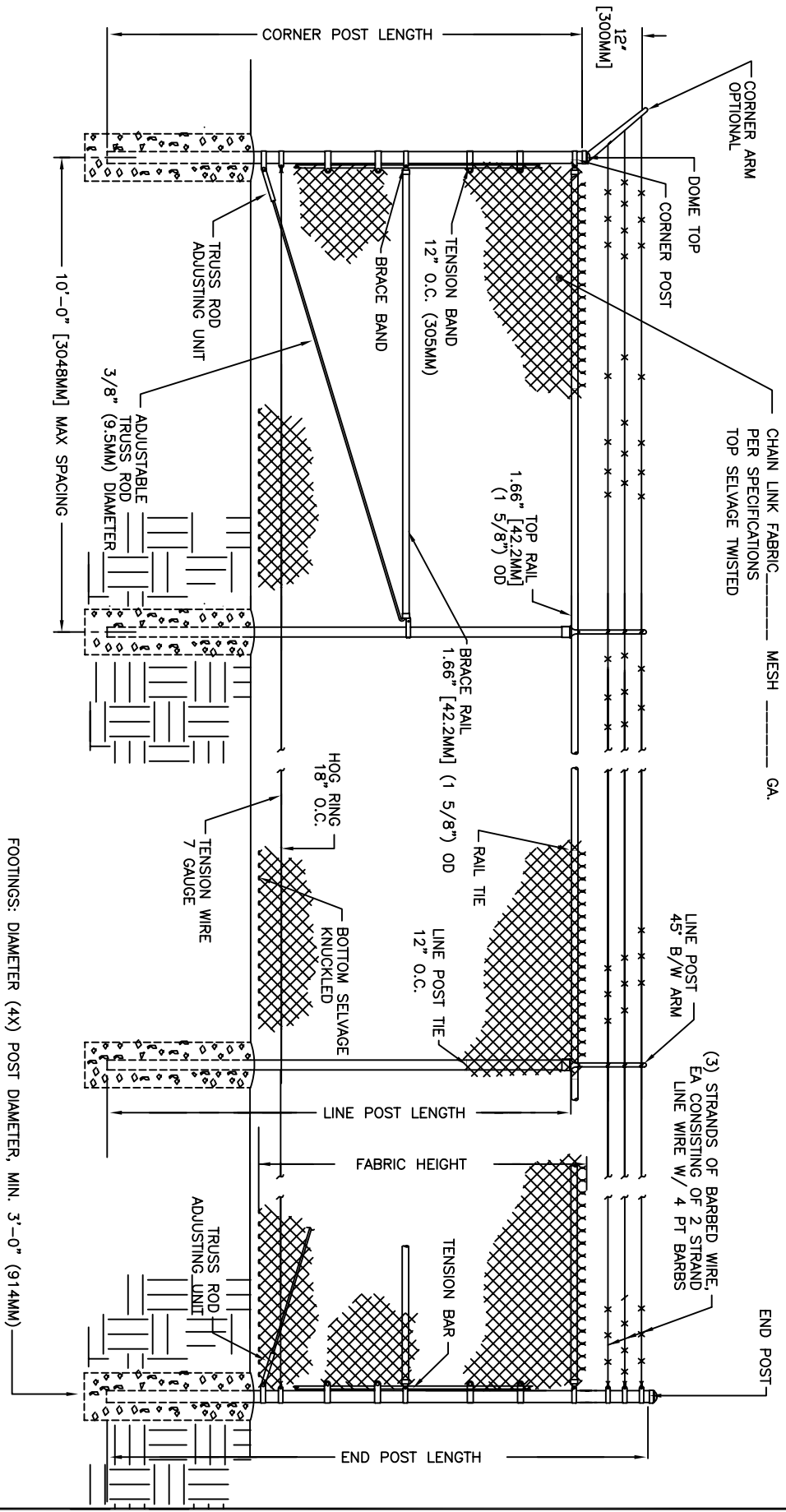


Chain Link Fence Manufacturers Institute
10015 Old Columbia Rd. Suite B 215
Columbia, MD. 21046

TYPICAL FENCE ELEVATION
TRUSSED BRACE RAIL
3 STRANDS BARBED WIRE
W/ TOP & BOTTOM TENSION WIRE

BY: ART
DATE: 08/11/10

SCALE: 1:40



TYPICAL FENCE SECTION

CLEMI
CLTA

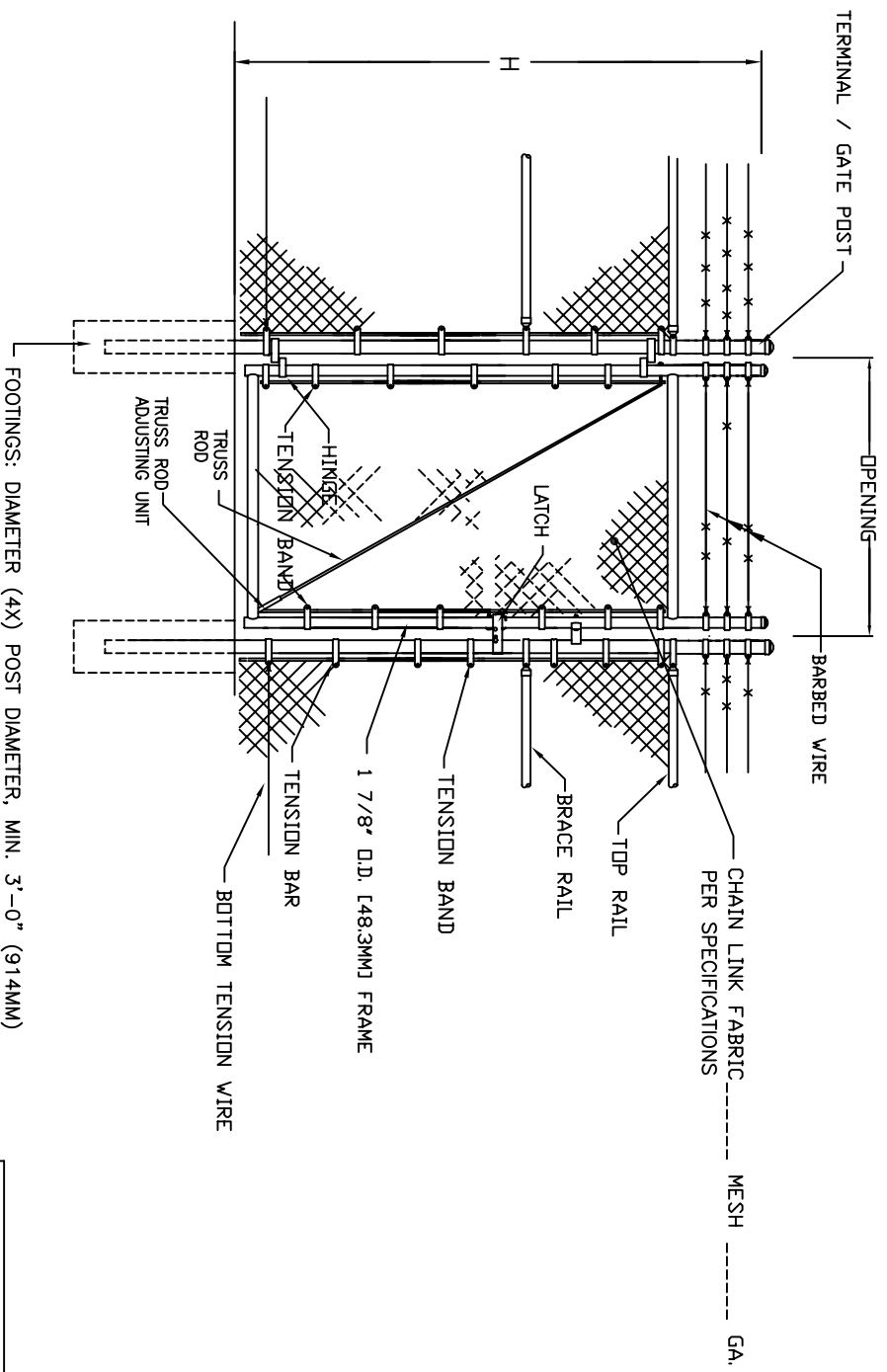
TYPICAL FENCE ELEVATION
TOP RAIL / TRUSSED BRACE RAIL
3 STRANDS BARBED WIRE
WITH BOTTOM TENSION WIRE

BY: ART
DATE: 02/11/10

SCALE: 1:40

CHAIN-LINK FENCE MANUFACTURERS INSTITUTE

Chain Link Fence Manufacturers Institute
10015 Old Columbia Rd. Suite B 215
Columbia, MD. 21046



NOTE:
 1. VERTICAL AND HORIZONTAL MEMBERS MAXIMUM 8' O.C.

GATE PLAN

NOM HEIGHT (H)
6'-0" OR 6+1=7'
7'-0" OR 7+1=8'
8'-0" OR 8+1=9'

TYPICAL SINGLE SWING GATE

CLEFMI

CLGA-1

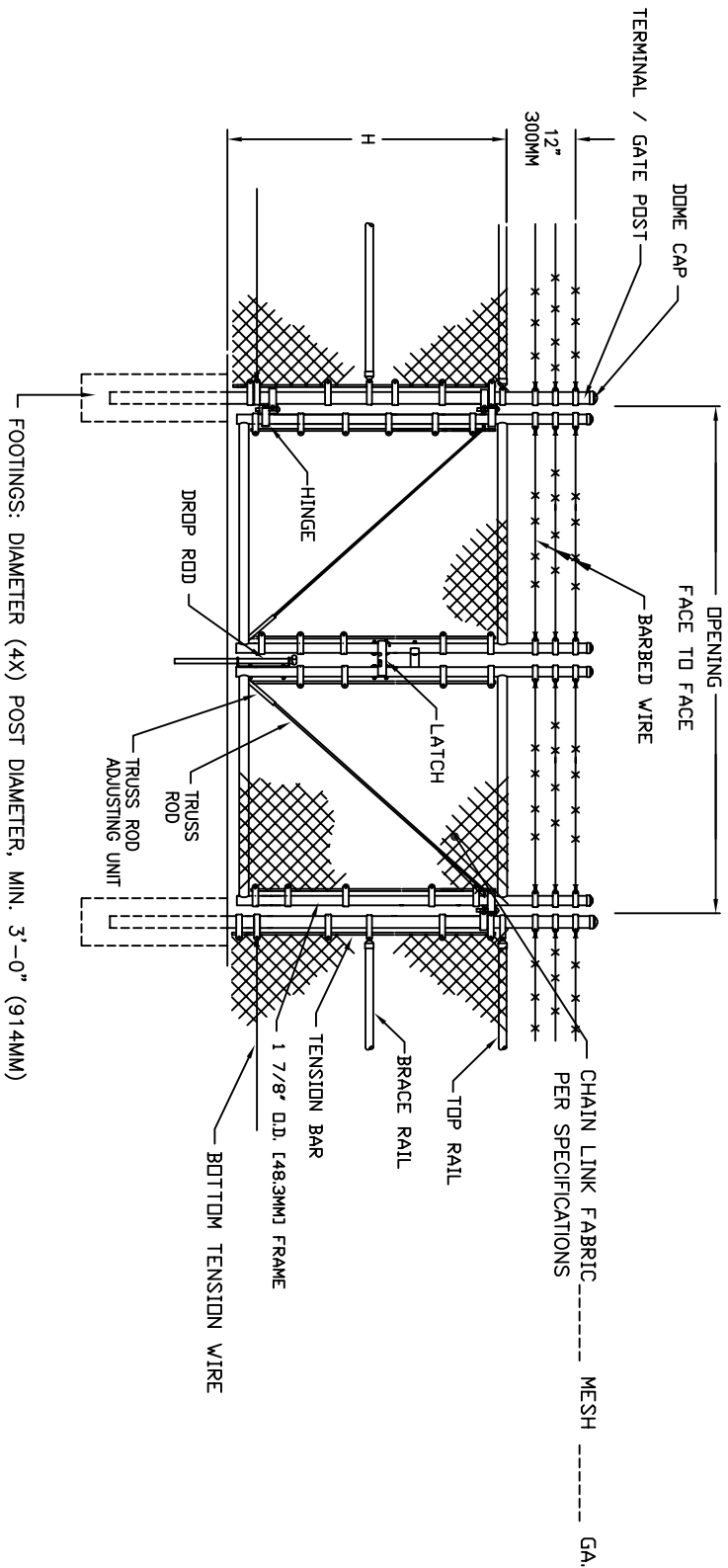
3 STRANDS BARBED WIRE (OPTIONAL)

BY: ART

DATE: 02/11/10

SCALE: 1:40

CHAIN-LINK FENCE MANUFACTURERS INSTITUTE
 Chain Link Fence Manufacturers Institute
 10015 Old Columbia Rd. Suite B 215
 Columbia, MD. 21046



NOTE:
 1. VERTICAL AND HORIZONTAL MEMBERS MAXIMUM 8' O.C.

GATE PLAN

NOM HEIGHT (H)
6'-0" OR 6+1=7'
7'-0" OR 7+1=8'
8'-0" OR 8+1=9'

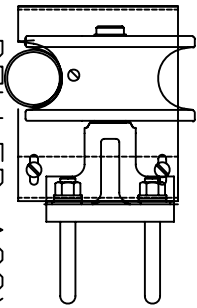
TYPICAL DOUBLE SWING GATE

3 STRANDS BARBED WIRE
 (OPTIONAL)

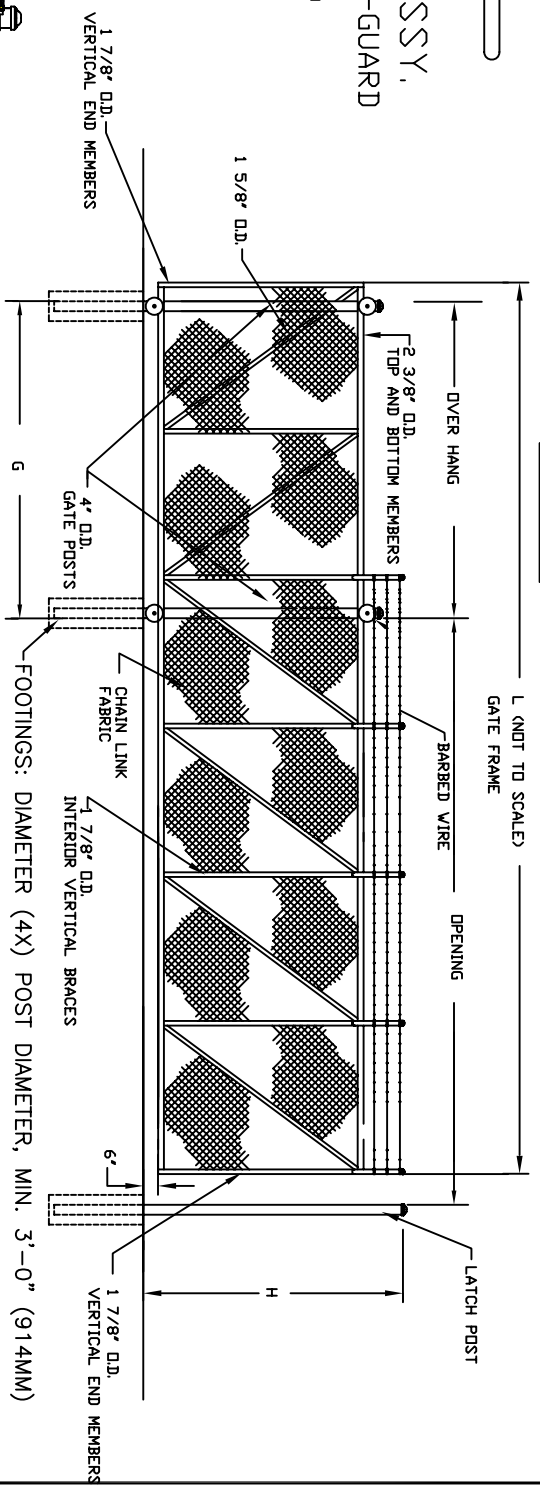
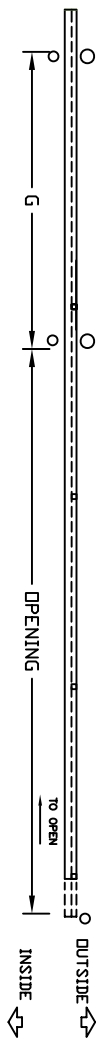
BY: ART
 DATE: 02/11/10

CLEMI
 CLGA-2
 SCALE: 1:40

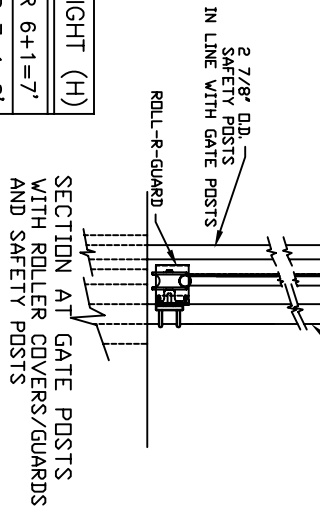
Chain-Link Fence Manufacturers Institute
 10015 Old Columbia Rd. Suite B 215
 Columbia, MD. 21046



ROLLER ASSY,
WITH ROLL-R-GUARD
(TOP)

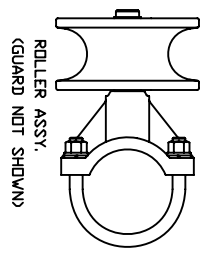


ELEVATION
ROLLER COVERS, GUARD, AND SAFETY POSTS

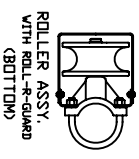


SECTION AT GATE POSTS
WITH ROLLER COVERS/GUARDS
AND SAFETY POSTS

NOM HEIGHT (H)
6'-0" OR 6+1=7'
7'-0" OR 7+1=8'
8'-0" OR 8+1=9'



ROLLER ASSY,
WITH ROLL-R-GUARD
(GUARD NOT SHOWN)



ROLLER ASSY,
WITH ROLL-R-GUARD
(BOTTOM)



Chain Link Fence Manufacturers Institute
10018 Old Columbia Rd. Suite B 215
Columbia, MD. 21046

SINGLE CANTILEVERED SLIDING GATE

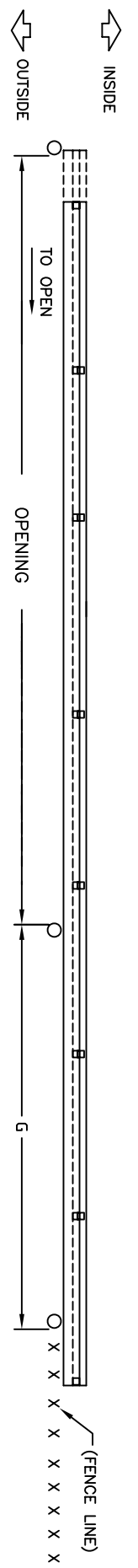
ROUND POSTS W/BARBED WIRE
(6' THRU 22' OPENINGS)

COMPILED BY: ART
DATE 02-11-10

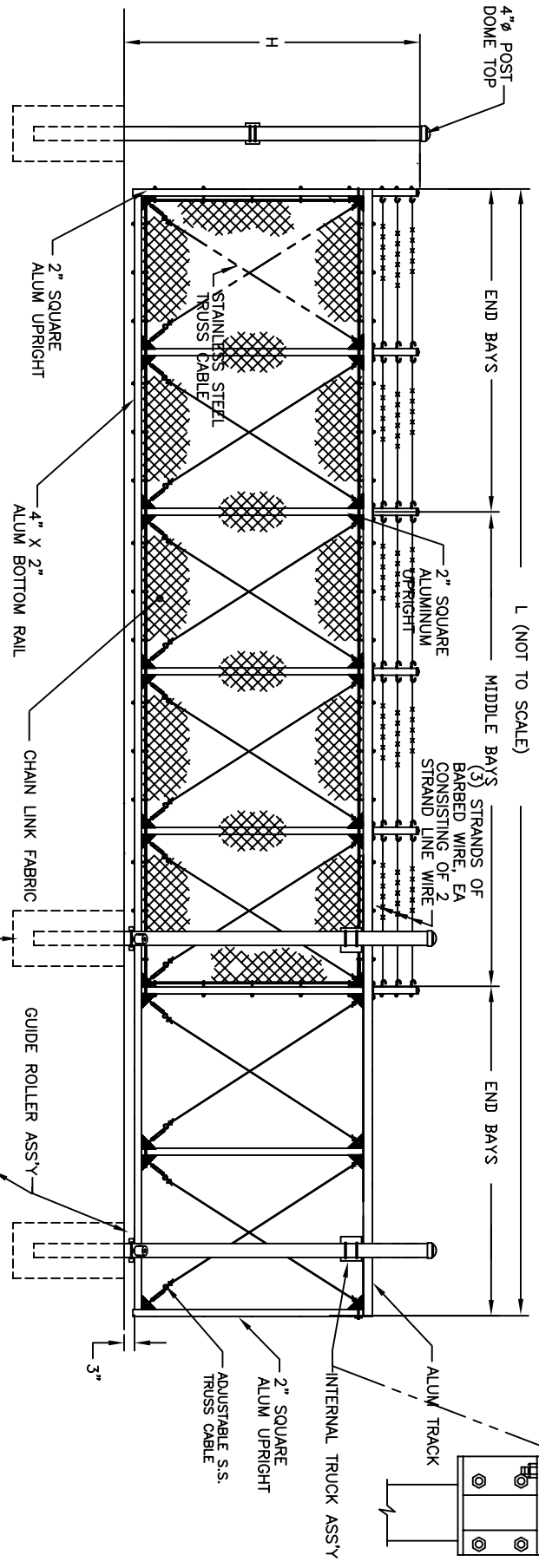
CLEFMI

TYPE II CLASS 1
EXTERNAL ROLLERS

SCALE:
1/4"=1'



GATE PLAN



NOM HEIGHT (H)	
6'-0"	OR 6+1=7'
7'-0"	OR 7+1=8'
8'-0"	OR 8+1=9'

FOOTINGS: DIAMETER (4X) POST DIAMETER, MIN. 3'-0" (914MM)

GATE ELEVATION - 7 BAYS SHOWN

NOTE:

1. MINIMUM BACKFRAME 40% OF OPENING.
2. VERTICAL AND HORIZONTAL MEMBERS MAXIMUM 8' O.C.



Chain Link Fence Manufacturers Institute
 10015 Old Columbia Rd. Suite B 215
 Columbia, MD. 21046

SINGLE CANTILEVERED SLIDING GATE
 ROUND POSTS, W/BARBED WIRE
 (10' THRU 30' OPENINGS)

BY: ART
DATE: 02-11-10

CLFMI
 ASTM F 1184 TYPE II CLASS 2
 INTERNAL ROLLERS